



TPartyIMES



August, September & October 2024

Issue Highlights

Calendar	2
Recent Trips	3-4
Ales of the UK	5
Upcoming trips	6-7
Ads & Information	8-10



Guess who has a new baby in the garage!
Watch for an emailed Chairman's' Cable with the story.

Famous Racing Quotes:

“Adding power makes you faster on the straights. Subtracting weight makes you faster everywhere”.
Colin Chapman

From the Editor

Well we're entering the dog days of summer, before you know it we'll be prepping for Old Man Winter. With that in mind, let's get those cars out on the road while we still can. Looking at the calendar on page 2, there are a host of events and drives all the way into November so there's no excuse...turn the key, drop the clutch and get moving! August has our annual lobster get together at Newick's in Dover, NH along with a drive to the Fruitland's Museum in Harvard, MA.

Also of note, look for an email with the Chairman's Cable "Homilies from the Hedgerow" with the story of Charles's latest acquisition. What a beauty, I'm guessing it will be making the trek to the Fruitland's Museum. Not to be missed if you are thinking of adding to your British iron collection make sure to check out page 9 for information on Norm Jambard's beautiful 1954 MG TF which is being offered for sale in Hemmings News!

Safety Fast!

MG T-Party & Bay State MGA Club
2024 Calendar of Events
MG T-Party Events in bold



- August 4 *Gore Place Classic Car Show, 52 Gore Street, Waltham, MA.*
<https://motorheadscarclub.net/>
- August 10-11 *VSCCA Mt. Equinox Hill Climb, Arlington, VT*
- Sun. Aug. 11 **Cruisin' for Crustaceans**, Newick's Lobster House,
Dover, NH <https://newicks.com/>**
- Sat. Aug. 24 **Drive to the Fruitlands Museum, Harvard, MA****
<https://thetrustees.org/place/fruitlands-museum/>
- Fri. Sep. 6 **Drive to the American Precision Museum, Windsor, VT.****
<https://americanprecision.org/>
- Sep. 20-22 **British Invasion, Stowe, VT****
- Fri. Oct. 4 **Historic Rail Excursion & Train Ride, NH****
<https://gsscenic.com/>
- Fri. Oct. 18? **Parker's Maple Barn Run**, Mason, NH**
- Early Nov.? **VSCCA Castle Hill Pre-War Hill Climb**, Ipswich, MA**
[DATE TBD]
- Sun. Dec. 8 **Annual Holiday Party @ Princeton Station,**
North Chelmsford, MA**

Drive to Fulchino Vineyards



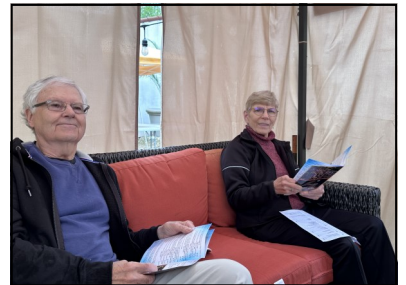
It was all set up for a lovely ride through the hills of New Hampshire to Hollis to sample the wines and partake of the charcuterie at Fulchino Vineyards. Charles had made the reservations for our group for a combination of wine tasting and sampling the award winning meats & cheeses on the lovely outdoor patio which brought to mind relaxing in the sun of Tuscany. An



Italian experience in New Hampshire indeed!. There was only

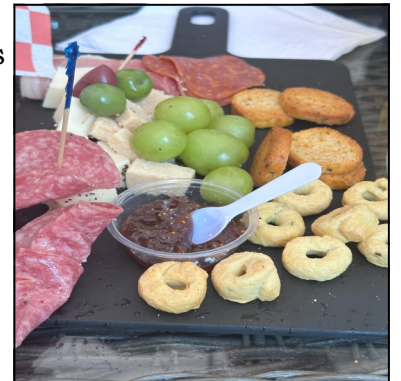


one small glitch to the plan, Charles had failed to coordinate with the weather gods as the skies grew darker & darker the closer we came to Hollis! Only one thing to do



when the weather gives you lemons, make Limoncello! Charles was able to procure a covered cabana out in the courtyard (there was a wedding scheduled inside the vineyard itself) which did a fair job of keeping us semi-dry as the skies opened up. Inconvenient possibly,

but after all, we were sipping wine and eating some fabulous meats & cheeses, what's a little rain! The food was excellent and the wine very good, Kim especially liked the Zinfandel. Despite



the wet weather, I was impressed with the winery and the grounds and would most assuredly go back again in the future. As an added bonus, my new stayfast top on the B actually DID NOT leak! I've owned three MGBs and this is the only time I've driven through torrential rain and not been soaked when I got home!



Schooner “When & If” Redux



The day didn't start off well for Kim & I as we motored down to Salem to sail the Famous “When & If” Schooner along the coast of Massachusetts. In contrast to our sail last year which carried the threat of afternoon thunderstorms, the sea was calm and the weather was great with a nice following breeze, just a perfect day. So perfect in fact that it seemed that the entirety of the population of Massachusetts decided to take to the shore for some sun & fun, resulting in parts of I-93 turning into a parking lot!



Although we left in plenty of time for the 2+30 hour trip to Salem, the heavy traffic turned our ride into a 3+ hour drive, which put us very late for the 12:30 departure. As it was, we pulled onto the dock just as the crew was completing the safety brief prior to casting

off...another 3 minutes and we would have been waving to the ship as it cleared the harbor!



So glad we made it as the weather was indeed perfect for sailing, and the cold rum & coke served by the crew was just the ticket to start to relax!

The harbor itself was very busy with ferries and other sailing ships, one which saluted us with a cannon blast! The “When & If” is an historic ship built to the specifications of General George Patton to sail around the world *When & If* he survived WWII, which sadly he did not. The present owner of the ship is working hard to raise the money to fulfill the

General's dream and there are plans to start the trip within the next two years. She's a beautiful ship and the crew invited us to tour the below deck crew quarters and galley...snug is a good word for the quarters! Our sail was very relaxing with a nice cooling breeze which kicked up as we crossed out of the harbor. The crew was very attentive and made sure to keep our glasses full! After we docked it was a short walk to the Sea Level Oyster Bar for lunch. The food was great and of course I couldn't skip a helping of oysters with the meal!



The Ales of the United Kingdom

“Give my people plenty of beer, good beer & cheap beer, and you will have no revolution among them”.
Queen Victoria



Exmoor Ales
Exmoor Ales Ltd
Golden Hill Brewery
Wiveliscombe, Somerset



Exmoor Ale

In 1807 the Hancock family founded what was to become one of the biggest breweries in the Southwest. Hancock's employed over half of the town of Wiveliscombe's workforce and owned most of its 36 pubs. Hancock's Brewery ceased operations in 1960 after 153 years. Fast forward to 1979 and the founding of Exmoor Ales. Originally called Golden Hill Brewery, after its hilltop location, part of the old Hancock's Brewery site. The Victorian Brewery tower and chimney still dominate the skyline of Wiveliscombe. The first beer brewed was called Exmoor Ale. Exmoor Ale was the brewery's sole beer and even though it was only supplying eight pubs, it sent several casks from its thirteenth brew to the Campaign For Real Ale's beer festival at Alexandra Palace. That thirteenth brew was far from unlucky; it was judged to be the Best Bitter in the country and Exmoor Ales (or Golden Hill as it was known then) never looked back. Thirty-nine years on and Exmoor Ale is still a favorite of real ale drinkers.

Tasting Notes:

This light chestnut-brown session beer has a fresh, grainy, biscuit nose with a hint of fresh citrus fruit in the background. The palate tingles with a stunning counter play between grainy, biscuit maltiness and a sprightly citrusy fruity center and a suggestion of mint. The refreshing finish is a Challenger hop-driven bitter sweetness with a lingering dryness. A whisper of chocolate (from a pinch of chocolate malt in the mash) and fruit also make an appearance. The sort of finish that says 'have another sip'.

Hops:

Goldings, Challenger, First Gold and Styrian Bobek

Tastes Great With:

Steak and kidney pudding or roast lamb, the sweetness in the latter dovetailing with the sweetness in the ale, with the bitterness keeping everything in order. Also fish and chips, with the hop fruitiness cutting through the fat of the batter, while making sure the fish's flavor isn't overwhelmed.



RSVP to Charles if you plan to attend: dyer-charles@comcast.net

Please Join the MG T-Party
Saturday, August 24th
Scenic Drive to
**Fruitlands Museum Harvard,
MA**



Plan to **Arrive @ 11:00 AM**

The Trustees of Reservations, Fruitlands Museum

<https://thetrustees.org/place/fruitlands-museum/>

102 Prospect Hill Road

Harvard, Massachusetts 01451

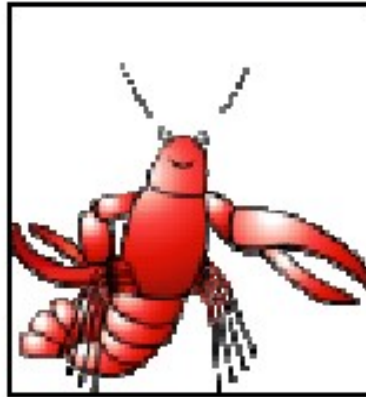
Phone: 978.456.3924



- Explore a bygone Transcendentalist community, whose pastoral landscape houses wide-ranging collections of art and artifacts. Fruitlands Museum has a diverse collection of art and material culture on 210 acres of land, stunning views, and miles of walking trails.
- **ADVANCE TICKET PURCHASE REQUIRED.** General Admission provides full day access to the Fruitlands Farmhouse, Shaker Gallery, Wayside Visitors Center, and Grounds. **Adult \$12; Senior \$10. Trustees members** receive **free** admission (but must still purchase tickets online in advance to reserve a spot; login to activate your discount). One ticket provides entry for an individual guest. One ticket is required per person. **Buy admission tickets here:** <https://tinyurl.com/August24thAdmissionTickets>
- "Visions of Utopia" guided 1-hour tours are also available at 10:30am, 1pm and 3pm with an **additional \$5 tour fee in addition to general admission.**



**MG T-Party & Bay State MGA Club
Annual Lobster Gathering**



Sunday August 11th, 12 Noon

Newick's Lobster House

431 Dover Point Road

Dover, NH

Join us for a quintessential New England treat, fresh lobster (full menu available for those poor souls who don't like lobster!)

Rain or shine!

Please RSVP to Bob Dougherty so we can get a good head count for the restaurant

rdocmg@gmail.com

Special gift for all who bring a British Car!

*******Sale...Sale...Sale...Sale*******

MG T-Party Regalia

It's time to move some Regalia! We've had very limited sales since 2008, and \$2000+ of inventory is doing us no good sitting in a box!

Please contact Kim Dougherty at kdoc135@gmail.com for sizing information and availability

- Men's Windbreaker w/MG T-Party logo (Retail \$70!) **\$30 includes shipping**
Med/Large/X-Large
- Women's Windbreaker w/T-Party logo (Retail \$70!) **\$30 includes shipping**
Med/Large/X-large/XX-Large
- Golf Shirts w/T-Party logo **\$20 includes shipping**
Med/Large/XL
- T-Party Baseball Caps **\$9 includes shipping**
- T-Party Logo Grill Badge **\$25 includes shipping**
- T-Party Cloth Patches **\$1 includes shipping**
- T-Party Logo Pins **\$1.50 includes shipping**



Norm Jambard's 1954 TF for sale

[https://www.hemmings.com/classifieds/
listing/1954-mg-tf-nashua-nh-2810130](https://www.hemmings.com/classifieds/listing/1954-mg-tf-nashua-nh-2810130)



Please see web site for more information



 **VINTAGE MECHA-TRONICS**
407-765-2780
Hickory, North Carolina

Convert your original or aftermarket Lucas RF95, RB106 or RB340 regulator into a modern, digital, solid state regulator. We offer both positive or negative ground systems — at an affordable price.

More info at: salesinfo@vintagemecha-tronics.com
<http://www.vintagemecha-tronics.com>
Dean Sprague # 13051 — David Ahrendt #10213



Aero Cycle Cars of England Aero Merlin Morgan three wheeler replica. Built by Steve Neal in 2014 with a Moto-Guzzi 1947cc engine with 3500 miles. Two seats side by side with disk brakes all around. Square steel tubing frame, yellow fiberglass sides with aluminum bonnet and stainless steel fenders. \$18,000 OBO. Steve Neal
skyhookeng@gmail.com



Premium Storage Sales & Consignment

For Vintage Vehicles from the 30's to 60's
Specializing in British Cars



174 Raymond Rd Candia NH 03034
historicmotorsports.net
603-587-0577

T-Party Key Personnel

Charles Dyer, Chairman

Hamilton, MA 978-468-0156
dyer-charles@comcast.net

Alex Gottfried, ViceChairman

Framingham, MA 978-764-4702
alex_gottfried@msn.com

Judy Kronwasser, Treasurer

Acton, MA 978-263-2519
kronwasser@yahoo.com

Maryellen & Rick Pelletier, Membership

East Wakefield, NH 603-871-8176
mpelletier1951@gmail.com

Chris Nowlan, Technical Advisor

Amherst, NH 603-673-0939
nowlanc@comcast.net

Rick Smith, Technical Advisor

Dedham, MA 781-801-3058
fdsmith50@gmail.com

Kim Dougherty, Regalia

Laconia, NH 603-948-2078
kdoc135@gmail.com

Bob Dougherty, Editor

Laconia, NH 603-948-2078
rdoc2mg@gmail.com



Supplemental Regalia available from KP Creative Stitches

KP Creative stitches is a home based embroidery studio that has digitized the T-Party logo so it can be put on items that are not currently stocked by the T-Party Regalia. Currently we can offer the logo on denim shirts (\$35) & sweatshirts (\$40). kathy@kpcreativestitches.com Special orders accepted
Kathy Ahrendt 603-426-8568 or Priscilla Guenther 828-728-4927